

HOW DOES ACCESS MANAGEMENT IMPROVE SAFETY?

Access management improves safety by reducing the number of potential conflict points for users of the transportation network, thereby lowering the risk of crashes.



CR 210 at CR 2209 Intersection



Traffic along CR 2209



Traffic along CR 210

PROJECT SCHEDULE & COST



CR 210 at CR 2209 Intersection

Project Phase	Status
Project Development & Environment (PD&E)	Ongoing
Design	Ongoing
Right-of-Way Acquisition	2027 - 2028
Construction and Construction Engineering & Inspection (CEI)	2027 - 2029
Estimated total Construction and CEI cost is \$19.5 million	

Schedule and Cost are preliminary and subject to change

HOW TO GIVE YOUR FEEDBACK

After reviewing the meeting materials, and/or participating in the meeting, you may submit your comments in the following ways:

- During the virtual or in-person meeting, or
- Through the project website at www.nflroads.com/CR210, or
- Emailing the Project Manager **Valerie Pacetti** at vpacetti@sjcfl.us, or
- Mailing comments to the Public Works-Engineering Division, St. Johns County, 2750 Industry Center Road, St. Augustine, FL 32084.

While comments about the project are accepted at any time, please note that comments must be received by **April 20, 2026**, to be included in the official meeting record.

Public participation is solicited without regard to race, color, national origin, age, sex, religion, disability, or family status. People who require special accommodations under the Americans with Disabilities Act or who require translation services (free of charge) should contact Valerie Pacetti, Project Manager, at least seven (7) days prior to the meeting.

PROJECT CONTACT INFORMATION



Valerie Pacetti, Project Manager
Public Works-Engineering Division
St. Johns County

2750 Industry Center Road
St. Augustine, FL 32084

(904) 209-0171

vpacetti@sjcfl.us



Stay Informed!

For more information, please visit the project website at www.nflroads.com/CR210 or scan the QR code.



CR 210 at CR 2209 (St. Johns Parkway) Intersection

Access Management Improvements

PUBLIC MEETING

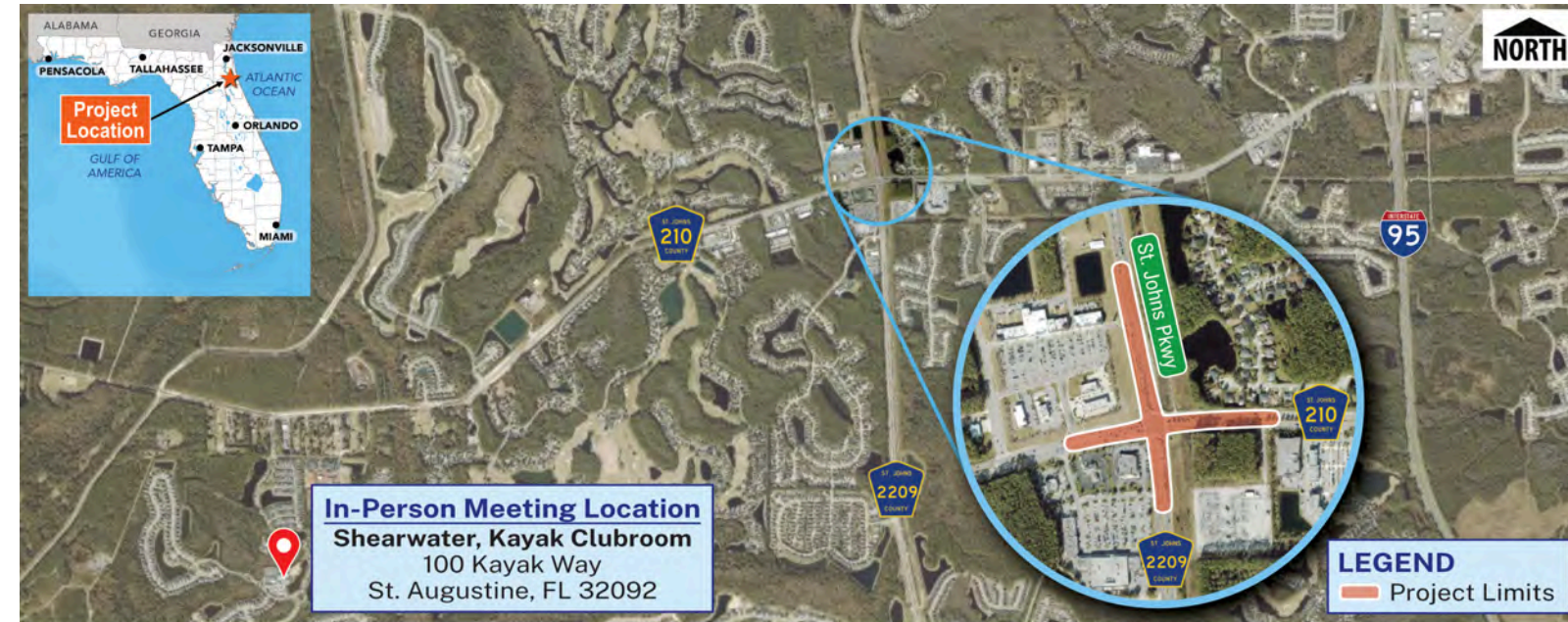
Financial Management Number: 441371-1 | St. Johns County, Florida



WELCOME

The Florida Department of Transportation (FDOT) District Two, in partnership with St. Johns County, welcomes you to the Hybrid Public Meeting for the County Road (CR) 210 at CR 2209 (St. Johns Parkway) Intersection Access Management Improvements Project (Financial Management No. 441371-1) in St. Johns County, Florida. This meeting is being held to inform the public of the proposed improvements and to provide an official forum for the public to share comments, questions, and concerns about the project.

PROJECT LOCATION MAP



ABOUT THE PROJECT

The CR 210 at CR 2209 intersection is experiencing significant congestion due to the rapid residential and commercial growth in the area. The proposed improvements will redesign the CR 210 at CR 2209 intersection to:

- Improve the traffic flow by reducing the average delay at the intersection by approximately three minutes during the morning and the evening rush hour.
- Enhance safety for all users by providing designated crossings for pedestrians and bicyclists and reducing the number of conflict points for motorized vehicles.

The proposed improvements will change how motorists navigate the intersection and access adjacent businesses.



CR 210 at CR 2209 Intersection

ACCESS MANAGEMENT

Access management is the careful planning of the location, design, and type of access to properties, businesses, and homes. This also includes median openings and driveway entrances. The goal of access management is to promote safe and efficient movement of people and goods by reducing potential conflicts on the roadway.

If you have concerns about access that affects your property or business, you may request an opportunity to present your concerns in person or in writing by contacting:

Duane Kent, P.E.

St. Johns County Engineer
2750 Industry Center Road
St. Augustine, Florida 32084

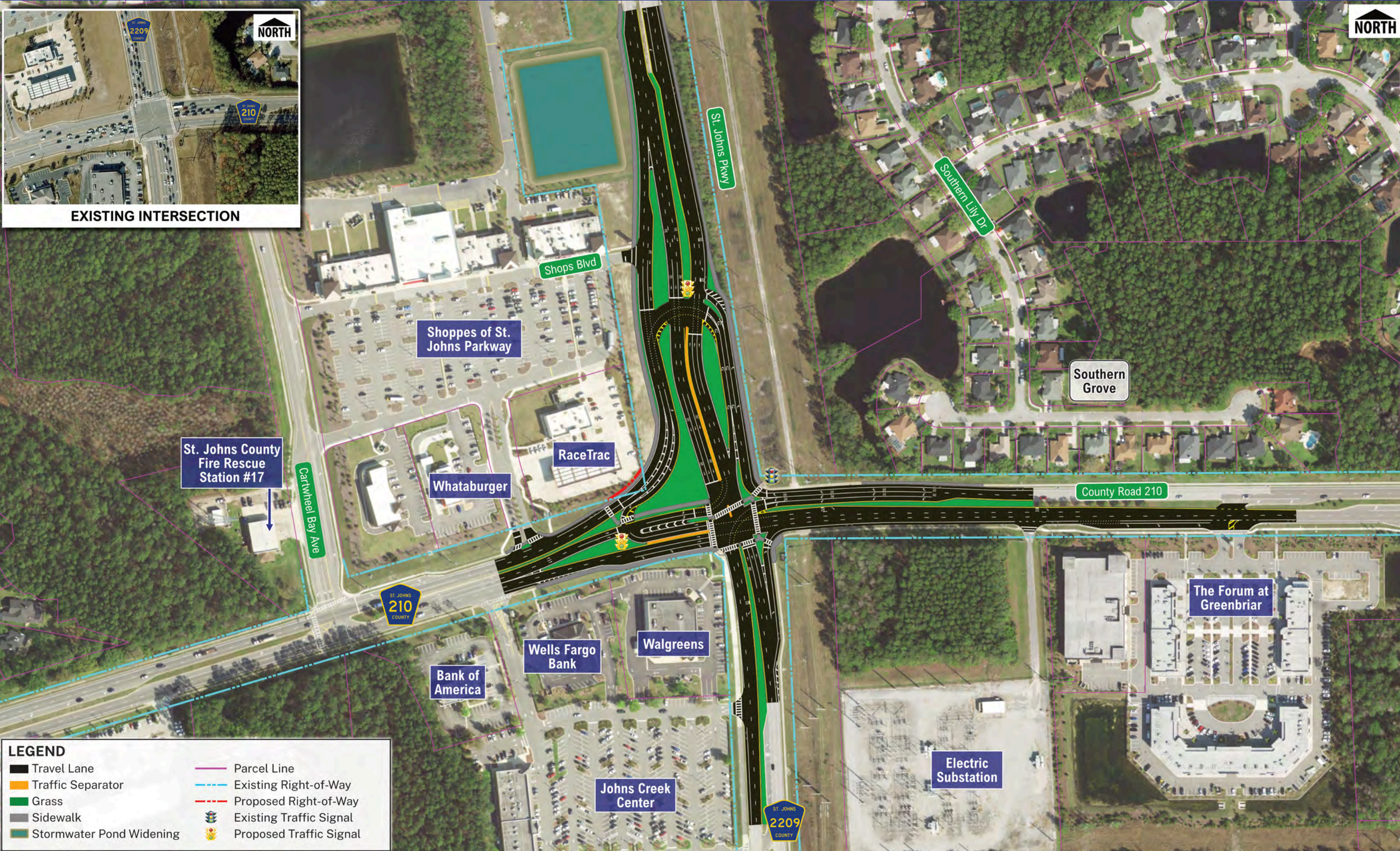
Tel: (904) 209-0266

Email: rkent@sjcfl.us

PROPOSED IMPROVEMENTS



EXISTING INTERSECTION



LEGEND

- Travel Lane
- Traffic Separator
- Grass
- Sidewalk
- Stormwater Pond Widening
- Parcel Line
- Existing Right-of-Way
- Proposed Right-of-Way
- Existing Traffic Signal
- Proposed Traffic Signal